



A Fast, Reliable, and Easy-to-use Scanner

Fast and reliable duplex scanner with large LCD screen

Scan to cloud servers
via Button Manager V2



Features:

- Scan rate up to 60 PPM / 120 IPM (300 dpi in color, gray, or B&W)
- Ultrasonic multi-feed detection
- Professional bundled software applications include Avison Button Manager 2, AvScan 5.0, PaperPort SE 14
- A large LCD display 128x 32 dots (16*4 characters)
- Reverse roller technology delivers outstanding feeding reliability
- Robust 100-page Automatic Document Feeder (ADF)
- Press and paste your image directly to your text editor such as Microsoft Word
- Press and convert your image text to editable text and paste the text to your text editor such as Microsoft Word
- Press and scan to cloud servers including Google Docs, Microsoft SharePoint, or FTP via Button Manager V2

Fast, Powerful, yet Simple

Speed and reliable. It's your top priority. You don't have time fiddling with the scanner. You just want to get the job done - fast, with bare minimum amount of time and effort. Now you can, with the Avison AV280, scan at blazing speeds of up to 70 pages per minute or 140 images per minute at 200 dpi in either black and white or color mode. The Avison AV280 is not only fast but it is also more reliable, with a 6,000 recommended daily duty cycle. The Avison AV280 can handle up to 100 sheets per batch operation and obtain high image quality based on the advanced CCD optical scanning technology at 600 dpi resolution.

A Large LCD Display



The AV280 is easy to use through the enhanced LCD display which allows 128x 32 dots (16*4 characters). By selecting your destination and pressing the "Scan"

button, the scan can be done and the scanned image can be sent to your specified destination application such as e-mail, printer, or your favorable image-editing software application. Up to nine frequently used scan settings and destinations can be preset for different scanning needs.

Reverse Roller Technology Enhances Feeding Reliability

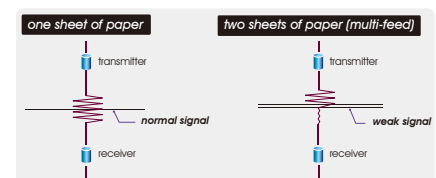
Equipped with the innovative reverse roller technology for advanced paper separation, the AV280 delivers outstanding feeding reliability for an even a wider variety of document types and weights.

Paperweight and Paper Protection Features

New features such as "Paperweight" and "Paper protection" are implemented in the TWAIN interface to protect valuable paper by stopping the scan process once a skewed page is detected and enhance the document feeding capability by reducing the risk of a skewed document or a paper jam.

Ultrasonic Multi-Feed Detection

With the built-in ultrasonic multi-feed detection capability, the scanner allows you to set overlapped paper by detecting paper thickness between documents. When multi-feed is detected a warning message will be prompted.



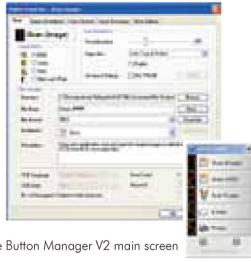
What We Have Bundled

The Avison AV280 comes with TWAIN and ISIS drivers, and are bundled with Avison Button Manager V2, AvScan 5.0, and PaperPort SE 14.

Avision AV280 Sheetfed Scanner

Avision's Button Manager V2

-Completes your scan with a single step

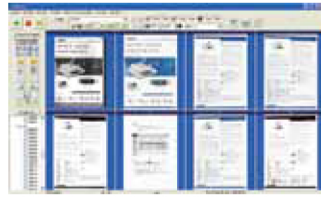


The Button Manager V2 main screen

Button Manager V2 makes it easy for you to scan and send your image to your favorite destinations with a press one button. Now the new version comes with an innovative feature to let you scan and automatically upload the scanned document to popular cloud repositories such as Google Docs, Microsoft SharePoint, or FTP. In addition, the iScan feature allows you to insert the scanned image or recognized text after optional OCR (Optical Character Recognition) process to your text editor such as Microsoft Word to get your job done easily and quickly.

AvScan 5.0

-The Intelligent Document Management Tool



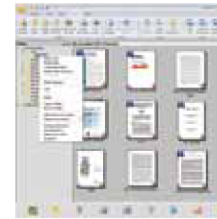
The AvScan 5.0 main screen

Document Imaging is the very first step of Document Management. However, poor quality images can cause serious problems to later indexing or storing processes. It may increase scanning labour costs and lowers the OCR accuracy. AvScan 5.0 ensures all documents are checked and polished at the time they are scanned such that the image quality is guaranteed before they are ready to use for other purposes.

AvScan 5.0 is an intelligent scanning and electronic filing solution. AvScan 5.0 possesses distinct features that convert and index scanned information into electronic documents for easy storage and fast retrieval.

PaperPort SE14

- The Professional Choice to Organize and Share Your Documents



The PaperPort SE14 main screen

PaperPort SE 14 is Nuance's most popular scanning and document management solution, carefully designed specifically for home office use. Part traditional file cabinet, part digital-document desktop, PaperPort SE 14 is the fastest and easiest way to scan, share, search, and organize your documents. Additionally, PaperPort SE 14 now delivers anytime-anywhere access to your most important files however it's convenient for you – using a PC, Mac, iPhone, iPad, or Android device.

Avision AV280 Product Specifications

Paper Feeding:	ADF 100-page capacity
Scanning Technology:	Color Charged-Coupled Device
Light Source:	LED
ID card thickness:	Up to 1.25 mm
Long Page Mode:	118" (300cm)
Document Size:	Max. 216 mm x 356 mm (8.5 in x 14 in) Min. 52 mm x 74 mm (2 in x 2.9 in)
Scanning Speed:	70 PPM/140IPM (color, A4, 200 dpi) 60 PPM/120 IPM (color, A4, 300 dpi)
Paper Thickness:	28 ~ 400 g/m ² (7 to 110 lbs)
Optical Resolution:	600 dpi
Output Resolution:	75, 100, 150, 200, 300, 400 and 600 dpi
Output Formats:	B/W, greyscale, 24-bit color
Bundled Software:	Avision Button Manager V2 Avision AvScan 5.0 PaperPort SE 14
Interface/Drivers:	USB 2.0 / TWAIN , ISIS , WIA
Power Supply:	Input: 100~240 VAC, 50/60 Hz Output: 24V, 2A
Power Consumption:	<47 W
Environmental Factors:	Operating temperature: 10°C to 35°C (50°F to 95°F) Operating humidity: 10% to 85%
Acoustical Noise:	Standby: <32 dB Operating: <50 dB
Dimensions(W x D x H):	Max.: 306 x 692 x 431 mm (12 x 27.3 x 17 in) Min.: 306 x 268 x 258 mm (12 x 10.6 x 10.2 in)
Weight:	6.5 kg (14.3 lbs)
Recommended Daily Scanning Volume:	6000 Sheets
Ultrasonic Multi-feed Detection:	Yes

Specifications subject to change without notice.

System Requirements

- Pentium 4 or higher
- Windows®XP/2000/Vista/7/8
- 512MB RAM (256MB RAM for Windows XP)
- CD-ROM drive
- USB port

Contents

- AV280 Scanner
- Power Supply
- USB 2.0 Cable
- CD-ROM includes:
 - Scanner Driver (TWAIN/ISIS/WIA Driver)
 - Avision Button Manager V2
 - Avision AvScan 5.0
 - PaperPort SE 14

Authorized Reseller



240.215.0224 U.S.

www.thecrowleycompany.com



AvScan 5.0

