

Compact & Easy-to-use

Complete your scan with a single press



Support plastic cards scanning (front-feed)

Features:

- Scan rate up to 60 PPM / 120 IPM (AV220D2+)
- Ultrasonic multifeed detection
- Professional bundled software applications include Avision Button Manager, AvScan 5.0, ScanSoft PaperPort 11SE
- Hi-speed USB 2.0 interface
- 118" (300 cm) long document scanning
- Support plastic cards scanning (front-feed)
- One button functionality allows you to assign up to nine scanning applications and perform at the touch of a button

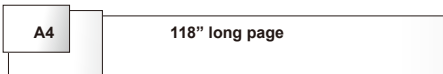
Fast, Powerful, yet Simple

Speed. It's your top priority. You don't have time fiddling with the scanner. You just want to get the job done - fast, with bare minimum amount of time and effort.

Now you can, with the Avision AV200 series. Scan at blazing speeds of up to 60 pages per minute or 120 images per minute (AV220D2+) - documents scanned in seconds! Not only is it fast, it's also more reliable, with a 3,000 recommended daily duty cycle. Handle up to 50 sheets per batch operation, and get high quality images utilizing professional CCD optical scanning technology at 600 dpi resolution.

Long Document Scanning

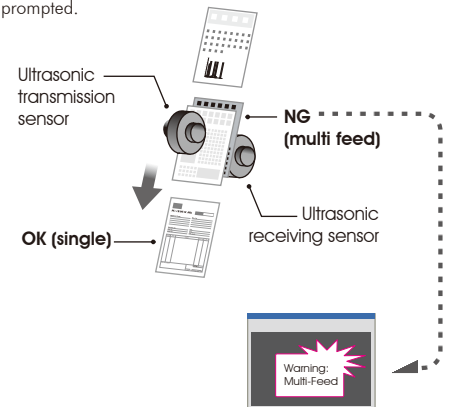
The AV200 series provides you a convenient feature to scan long-page document up to 118"(300 cm). This is a cost and time-saving solution for insurance company and healthcare institutions that need to digitize insurance bills and patient's records.



Ultrasonic Multi-Feed Detection

With the built-in ultrasonic multi-feed detection capability, the scanner allows you to set overlapped paper by

detecting paper thickness between document. When multi-feed is detected a warning message will be prompted.



What we have bundled

The Avision AV200 series scanners come with TWAIN and ISIS drivers, and are bundled with Avision Button Manager, AvScan 5.0, and ScanSoft PaperPort 11SE.

Avision's Button Manager

Completes your scan in a single step



The Button Manager main screen

Avision's

Button Manager scans directly to Adobe® certified searchable PDF!



Avision AV210D2+ / 220G+ / 220D2+ Sheetfed Scanner

Avision's state-of-the-art software application, the Button Manager, enables you to complete complex scanning tasks in just a single step. When the button is pressed, the scanner automatically scans your documents and converts them to a highly compressed file format, Adobe searchable PDF, or other image formats, and then sends the file to a designated folder, or other destination applications such as e-mail, printer, or your favorite software application. The original step-by-step procedure is replaced with only a single touch of the button.

Document Imaging is the very first step of Document Management. However, poor quality images can cause serious problems to later indexing or storing processes. It may increase scanning labour costs and lowers the OCR accuracy. AvScan 5.0 ensures all documents are checked and polished at the time they are scanned such that the image quality is guaranteed before they are ready to use for other purposes.

AvScan 5.0 is an intelligent scanning and electronic filing solution. AvScan 5.0 possesses distinct features that convert and index scanned information into electronic documents for easy storage and fast retrieval.



PaperPort 11SE is the easiest way to turn piles of paper and photos into organized files that you can quickly find, use and share. Stop wasting time searching for paper documents. End the frustration of organizing, editing and sharing your digital photographs. PaperPort makes it simple to connect your scanner and computer together to work with PDF and JPEG images just like working with paper documents right on your desktop. It is the perfect solution for your home or small office.

AvScan 5.0

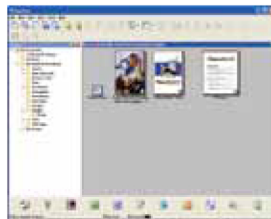
-The Intelligent Document Management Tool



The AvScan 5.0 main screen

ScanSoft PaperPort 11SE

- The Professional Choice to Organize and Share Your Documents



The PaperPort11SE main screen

Avision AV210D2+ / 220G+ / 220D2+ Product Specifications

Paper Feeding:	ADF 50-page capacity
Scanning Technology:	Color Charged-Coupled Device
ID card thickness:	Up to 1.25 mm (Front-feed)
Long Page Mode:	118" (300cm)
Document Size:	Max. 216 mm x 356 mm (8.5 in x 14 in) Min. 50 mm x 88 mm (2 in x 3 in)
Scanning Speed:	AV210D2+: 60 PPM (color, A4, 200 dpi) AV220G+: 30 PPM/60 IPM AV220D2+: 60 PPM/120 IPM
Paper Thickness:	28 ~ 158 g/m ² (7 to 42 lbs)
Optical Resolution:	600 dpi
Output Resolution:	75, 100, 150, 200, 300, 400 and 600 dpi
Output Formats:	B/W, greyscale, 24-bit color
Bundled Software:	Avision ButtonManager Avision AvScan 5.0 PaperPort 11SE Kofax VRS (AV220D2+)
Interface/Drivers:	USB 2.0 / TWAIN , ISIS
Power Supply:	Input: 100~240 VAC, 50/60 Hz Output: 24V, 2A
Power Consumption:	<37 W
Environmental Factors:	Operating temperature: 10°C to 35°C (50°F to 95°F) Operating humidity: 10% to 85%
Acoustical Noise:	Standby: <45 dB Operating: <58 dB
Dimensions(W x D x H):	337 x 168 x162 mm (13.3 x 6.6 x 6.4 in)
Weight:	AV210D2+: 3.6 kg (7.9 lbs) AV220G+: 4.0 kg (8.8 lbs) AV220D2+: 4.0 kg (8.8 lbs)
Recommended Daily Scanning Volume:	4000 Pages
Multi-feed Detection:	Ultrasonic

System Requirements

- Pentium 4 or higher
- Windows®XP/2000/Vista/7
- 128MB RAM (256MB RAM for Windows XP)
- CD-ROM drive
- USB port

Contents

- AV210D2+/220G+/220D2+ Scanner
- Power Supply
- USB 2.0 Cable
- CD-ROM including:
 - Scanner Driver (TWAIN/ISIS Driver)
 - Avision Button Manager
 - Avision AvScan 5.0
 - ScanSoft PaperPort 11SE

Authorized Reseller



240.215.0224 U.S.

www.thecrowleycompany.com



AV220D2+



AvScan 5.0

ScanSoft PaperPort 11SE