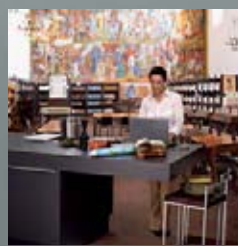


OS 12002 C  
OS 12002 G

Easy, fast  
and effective



Innovative and  
ergonomic

**ZEUSCHEL**  
*The Future of the Past.*

OS 12002 C  
OS 12002 G

Easy, fast  
and effective.



*“Nothing is stronger  
than an idea whose  
time has come.”*

*Victor Hugo (1802–1885)*

Form follows function. Innovative design, the latest lighting technology, and easy-to-use functions are the features of our new generation of A2 scanners. Everything you need to digitize large-format documents, books, and maps. The OS 12002 range – consisting of the OS 12002 G grayscale scanner and the OS 12002 C color model – is the ideal, future-proof solution. The OS 12002 book copier completes the range. The rear, glare-free illumination and the intuitive operating system, with monitor image viewing, provide perfect results. Faulty scans and uneven illumination are thus things of the past. The OS 12002 range is particularly kind to documents and is user-friendly thanks to its very high processing speed – with a scanning time of one second, it is quicker than the blink of an eye. The low level of light emission does not just protect valuable documents but also makes handling safe, efficient, and ergonomically functional. With its functional form, the OS 12002 makes scanning child's play. It combines innovation and intuition in a unique way – and wins everyone over with its top design.

## Product advantages

- high speed  
(scan time only 1 sec. per scan)
- independent from ambient light
- low exposure to light (illumination will only be activated when scanning)
- no dazzling, no heat load
- no UV radiation
- best results
- high productivity
- no reflections with high-gloss originals
- excellent cost-performance ratio
- optionally also as Advanced model: Book cradle with glass plate, 90° opening, automatic opening of glass plate after scanning



## Specifications

**Description:** overhead tabletop scanner for books, newspapers, and large-format documents (certificates, drawings, maps)

**Scan area:** 635 x 460 mm (> DIN A2)

**Book cradle:** *Comfort version:* max. book thickness 100 mm, *Advanced version:* max. book thickness 150 mm, with glass plate, adjustable to 90°, automatic opening of glass plate after scan cycle

**Auto focus approx. 50 mm**

**Scan mode:**

*OS 12002 C:* 36 bit color, 12 bit grayscale, 1 bit b&w

*OS 12002 G:* 12 bit grayscale, 1 bit b&w

**Maximum resolution:** 100 - 600 ppi

**Scan speed:** 1 sec./300 ppi in gray scale, 4 sec./400 ppi in color

**Data display:** all standard formats, e.g. TIFF uncompressed, TIFF G4, JPEG, JP2, Multipage TIFF, PDF, BMP, PCS

**User software:**

software OS 12 for high productivity

**Scanner interface:** Gig E

**Image processing/image enhancement software (optional):**

integrated color management, Perfect Book (book-curve correction), contrast improvement, image rotation, despeckle, deskewing, cropping, masking, b&w scanning with dynamic threshold, etc.

**Connected loads:**

90 - 250 V, 50/60 Hz, 1.1 A, other voltages on request

**Dimensions:** (w x d x h)

950 x 890 x 1,250 mm

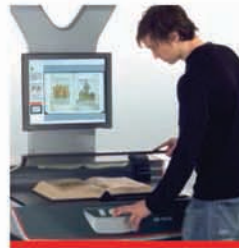
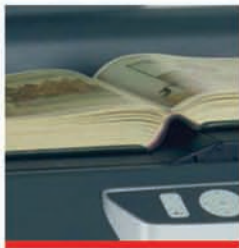
**Work space:** (w x d) 700 x 720 mm

**Accessories:**

PC, monitor, workstation

We reserve the right to make technical changes without notice.

If you are looking for a perfect solution for digitization and preservation of valuable cultural assets and documents, talk to us. For more than 50 years we have been managing all processes of document capturing, archiving, processing and provision of digital data with our analog and digital systems for scanning and microfilm technology at the highest level. Our systems are used worldwide by renowned archives, libraries, universities, land registries as well as commercial enterprises and service providers.



Exclusive North American Distributor



240.215.0224

info@thecrowleycompany.com

www.thecrowleycompany.com

The Future of  
the Past.



Zeitschel GmbH · Heerweg 2 · 72070 Tübingen

Tel.: +49 7071 9706-0 · Fax: +49 7071 9706-44

info@zeitschel.de · [www.zeitschel.com](http://www.zeitschel.com)