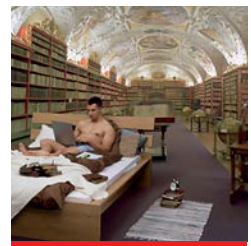
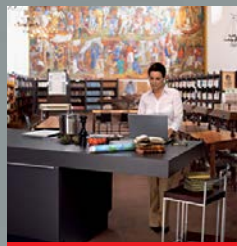


OS 12002 Bookcopy

Easy, fast
and effective



Innovative and
ergonomic

ZEUSCHEL
The Future of the Past.

OS 12002 Bookcopy

Easy, fast and
effective



*“Nothing is stronger
than an idea whose
time has come.”*

Victor Hugo (1802–1885)

Form follows function. Innovative design, the latest lighting technology, and easy-to-use functions are the features of our new generation of book scanners. Everything you need to copy large-format documents, books, and maps. The OS 12002 Bookcopy is the ideal, future-proof solution. The rear, glare-free illumination and the intuitive operating system, with monitor image viewing, provide perfect results. Faulty copies and uneven illumination are thus things of the past.

The OS 12002 range is particularly kind to documents and is user-friendly thanks to its very high processing speed – with a scanning time of one second, it is quicker than the blink of an eye. The low level of light emission does not just protect valuable documents but also makes operating it safe, efficient, and ergonomically functional. With its functional form, the OS 12002 Bookcopy makes copying child's play. It combines innovation and intuition in a unique way.

Product advantages

- Easier than a copier system
- No faulty copies
- High scan speed
(Scan time only 1 sec. per scan)
- No reflections with high-gloss originals
- No dazzling, no heat load
- High output quality
- Direct hardcopy output
- Direct digital output
- E-mail-function
- The Bookcopy is available as system
for color as well as for gray scale
- Excellent cost-performance ratio
- Perfect Book – 3D scan technology
for perfect book curve correction





Specifications

Description: overhead copy system for books, newspapers and large-format documents (certificates, drawings, maps)

Original formats: 635 x 460 mm (> DIN A2)

Book cradle: manual comfort book holder

Maximum book thickness: 100 mm

Auto focus: approx. 50 mm

Scan mode: 12 bit gray scale, 1 bit b/w and 24 bit color

Maximum resolution: 300 ppi (600 ppi optional)

Scan speed: 1 sec/300 ppi gray scale, 3,8 sec/400 ppi color

Data display: *hard copy:* direct connection to laser printer A4/A3; *digital data output:* direct output via USB, memory card via optional media center

Formats: TIFF, Multipage TIFF, PDF, Multipage PDF, JPEG

Scanner interface: Gig E

Scan Software: Bookcopy-Software

Perfect Book (optional): 3D scan technology for perfect book curve correction

Operator terminal: easiest operation via 19-inch monitor and navigation pad

Power requirement:

230 V, 50/60 Hz, 1.1 A

Accessories: laser printer, workstation, E-Mail-function

Dimensions:

(w x d x h) 955 x 880 x 1312 mm

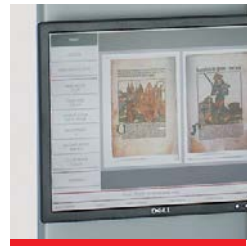
Work space: (w x d) 700 x 720 mm

Weight: approx. 70 kg

We reserve the right to make technical changes without notice.

If you are looking for a perfect solution for digitization and preservation of valuable cultural assets and documents, talk to us. For more than 50 years we have been managing all processes of document capturing, archiving, processing and provision of digital data with our analog and digital systems for scanning and microfilm technology at the highest level.

Our systems are used worldwide by renowned archives, libraries, universities, land registries as well as commercial enterprises and service providers.



The Future of the Past.



Zeutschel GmbH · Heerweg 2 · 72070 Tübingen
Tel.: +49 7071 9706-0 · Fax: +49 7071 9706-44
info@zeutschel.de · www.zeutschel.com