

Easy to use, Affordable

Complete your scan with a simple press



Input and output paper tray can be fold when not in use.



Features

- Double-sided color documents up to legal size
- Easy to use button scanning
- Automatic crop, deskew and thresholding image-enhancing features
- Scans documents, plastic ID cards, checks, business cards
- 9 pre-programmed "scan-to" destinations
- Scan rate up to 30 ppm/60 ipm (AV186+)
- Scan rate up to 30 ppm (AV185+)
- Compact ADF scanner holds up to 50 pages

Portable, Ultralight, Affordable

The AV185+/186+ is a compact, high-speed color scanner. Designed to scan both documents up to legal size and plastic ID cards, the AV185+/186+ can be used to capture all the information you need in a fast, and reliable performance.

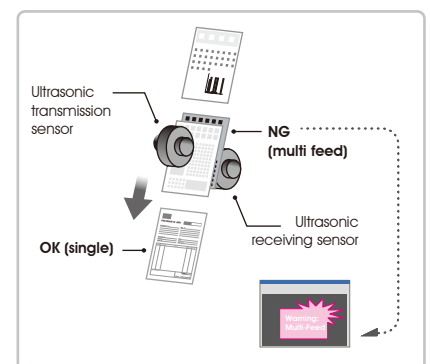
The scanner's straight paper path provides smooth and reliable paper transmit and less document jam. It also ensures thicker paper up to 400 g/m² and embossed plastic cards up to 1.25mm can be transmitted smoothly.

With the 50-page auto document feeder, the AV186+ offers fast scan rate of 30 pages per minute for single-sided documents and 60 images per minute for double-sided documents.

For ease of use, nine scanning presets can be custom programmed for different applications. The entire scanning process is then as simple as selecting a preset and pressing the simplex or duplex scan button. Tasks such as scanning, and storing or sending the images to application become completely automated processes.

Ultrasonic Multi-Feed Detection

With the built-in ultrasonic multi-feed detection capability, the scanner allows you to set overlapped paper by detecting paper thickness between document. When multi-feed is detected a warning message will be prompted.



What we have bundled

The Avison AV185+/186+ scanner comes with TWAIN and ISIS drivers, and is bundled with Avison Button Manager, AvScan 5.0, and ScanSoft PaperPort 11SE software application.

Avision's

Button Manager scans directly to Adobe® certified searchable PDF!



Avision AV185+/186+ Sheetfed Scanner

Avision's Button Manager

-Completes your scan in a single step



The Button Manager main screen

Avision's state-of-the-art software application, the Button Manager, enables you to complete complex scanning task in just a single step. When the button is pressed, the scanner automatically scans your documents and converts them to a highly compressed file format, Adobe searchable PDF, or other image formats, and then sends the file to a designated folder, or other destination applications such as e-mail, printer, or your favorable software application. The original step-by-step procedure is replaced with only a single touch of the button.

Avision AvScan 5.0

-The Intelligent Document Management Tool



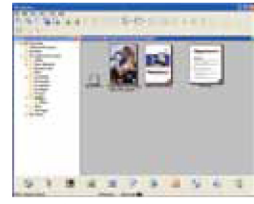
The AvScan 5.0 main screen

Document imaging is the very first step of document management. However, poor quality images can cause serious problems to later indexing or storing processes. It may increase scanning labour costs and lower OCR accuracy. AvScan 5.0 ensures all documents are checked and polished at the time they are scanned such that the image quality is guaranteed before they are ready to use for other purposes.

AvScan 5.0 is an intelligent scanning and electronic filing solution. AvScan 5.0 possesses distinct features that convert and index scanned information into electronic documents for easy storage and fast retrieval.

ScanSoft Paperport 11SE

- The Professional Choice to Organize and Share Your Documents



The PaperPort 11SE main screen

PaperPort provides the easiest way to turn paper into organized digital documents that everybody in an office can quickly find and use. PaperPort works with scanners, multifunction printers, and networked digital copiers to turn paper documents into digital documents. It then helps you to manage them along with all other electronic documents in one convenient and easy-to-use filing system.

Avision AV185+/186+ Product Specifications

Paper Feeding:	ADF 50-page capacity
Scanning Technology:	Color Charged-Coupled Device (CCD)
Scanning Mode:	AV185+: Simplex AV186+: Duplex
ID card thickness:	Up to 1.25 mm
Document Size:	Max. 216 mm x 356mm (8.5 in x 14 in) Min. 50 mm x 63.5 mm (2 in x 2.5 in)
Scanning Speed:	AV185+: 30 PPM (Color, A4, 300 dpi) 40 PPM (Color, A4, 200 dpi) AV186+: 30 PPM / 60 IPM (Color, A4, 300 dpi) 40 PPM / 80 IPM (Color, A4, 200 dpi)
Paper Thickness:	28~400 g/m ² (7~110 lbs)
Long Page Mode:	118"
Optical Resolution:	600 dpi
Output Resolution:	75, 100, 150, 200, 300, 400 and 600 dpi
Output Formats:	B/W, greyscale, 24-bit color
Bundled Software:	Avision Button Manager, Avision AvScan 5.0, PaperPort 11SE
Interface/Drivers	USB 2.0 / TWAIN , ISIS
Power Supply:	Input: 100-240 VAC, 50/60 Hz Output: 24V, 2.0A
Power Consumption:	<30 W
Environmental Factors:	Operating temperature: 10°C to 35°C (50°F to 95°F) Operating humidity: 10% to 85%
Acoustical Noise:	Standby: <45 dB Operating: <50 dB
Dimensions (W x D x H):	305 mm x 162 mm x 195 mm (12 in x 6.4 in x 7.7 in)
Weight:	3.1 kg (6.8 lbs)
Recommended Daily Scanning Volume:	4,000 Sheets
Multi-feed Dection:	Ultrasonic

System Requirements

- Pentium 4 or higher
- Windows®XP/2000/Vista/7
- 512MB RAM (256MB RAM for Windows XP)
- CD-ROM drive
- USB port

Contents

- AV185+/186+ Scanner
- Power Supply
- USB 2.0 Cable
- Quick Guide
- CD-ROM includes:
 - Scanner Driver (TWAIN/ISIS Driver)
 - Avision Button Manager
 - Avision AvScan 5.0
 - PaperPort 11SE



Authorized Reseller



240.215.0224 U.S.

www.thecrowleycompany.com

