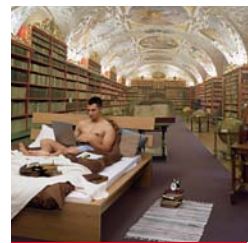
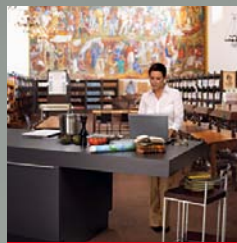
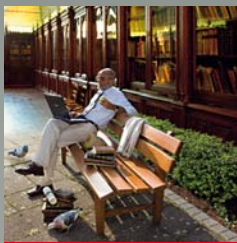




# OS 12000 HQ

Combined – Quality  
and productivity



Innovative and  
ergonomic

 **ZEUTSCHEL**  
*The Future of the Past.*

# OS 12000 HQ

Combined – Quality  
and productivity



*“Nothing is stronger  
than an idea whose  
time has come.”*

*Victor Hugo (1802–1885)*

Form follows function. Innovative design, the latest lighting technology, and easy-to-use functions are the features of our new generation of A2 scanners. Everything you need to digitize large-format documents, books, and maps. The OS 12000 range – consisting of the OS 12000 G grayscale scanner, the OS 12000 C color model and the OS 12000 HQ – is the ideal, future-proof solution. The OS 12000 book copier completes the range.

The rear, glare-free illumination and the intuitive operating system, with monitor image viewing, provide perfect results. Faulty scans and uneven illumination are thus things of the past. The OS 12000 range is particularly kind to documents and is user-friendly thanks to its high processing speed – with a scanning time of one second, it is quicker than the blink of an eye. The low level of light emission does not just protect valuable documents but also makes handling safe, efficient, and ergonomically functional.

With its functional form, the OS 12000 makes scanning child's play. It combines innovation and intuition in a unique way – and wins everyone over with its top design.

## Product advantages

- High speed  
(scan time only 2 sec. per scan A4)
- Low exposure to light (illumination will only be activated when scanning)
- No dazzling, no heat load
- No UV radiation
- Best results
- High productivity
- No reflections with high-gloss originals
- Perfect illumination
- Easy installation
- Excellent cost-performance ratio

## Specifications

**Description:** overhead tabletop scanner for books, newspapers, and large-format documents (certificates, drawings, maps)

**Scan area:** 635 x 460 mm (> DIN A2)

**Book cradle:** *Advanced version:* max. book thickness 150 mm, with glass plate, adjustable to 90°, automatic opening of glass plate after scan cycle

**Auto focus approx. 50 mm**

**Scan mode:**

36-bit color, 12-bit grayscale, 1-bit b&w

**Maximum resolution:** 100 - 600 ppi

**Maximum optimal scan resolution:**

400 x 600 ppi

**Scan speed:** 9 sec./400 ppi A2

**Scanner interface:** IEEE 1394 (Firewire)

**Perfect Book:** 3D scan technology

for perfect book curve correction and automatic document detection

**Data display:** all standard formats, e.g.

TIFF uncompressed, TIFF G4, JPEG, JP2, Multipage TIFF, Multipage PDF, PDF, BMP, PCX

**User software:** software OS 11 and/or OS 12 for high productivity



**Image processing/image enhancement software (optional):**

integrated color management, Perfect Book (book-curve correction), contrast improvement, image rotation, despeckle, deskewing, cropping, masking, b&w scanning with dynamic threshold, etc.

**Connected loads:** 230 V, 50/60 Hz, 1.1 A, other voltages on request

**Dimensions:**

(w x d x h) 950 mm x 890 mm x 1,250 mm

**Work space:** (w x d) 700 mm x 720 mm

**Accessories:**

PC, monitor, workstation

We reserve the right to make technical changes without notice.

If you are looking for a perfect solution for digitization and preservation of valuable cultural assets and documents, talk to us. For 50 years we have been managing all processes of document capturing, archiving, processing and provision of digital data with our analog and digital systems for scanning and microfilm technology at the highest level.

Our systems are used worldwide by renowned archives, libraries, universities, land registries as well as commercial enterprises and service providers.



# The Future of the Past.



Zeutschel GmbH · Heerweg 2 · 72070 Tübingen  
Tel.: +49 7071 9706-0 · Fax: +49 7071 9706-44  
info@zeutschel.de · [www.zeutschel.com](http://www.zeutschel.com)