

Zeutschel ScanStudio

The best of both worlds



Zeutschel powered by
PHASEONE

We Digitize Your World



Scanner and photo studio in one

All kind of originals – highest requirements – one system

The Zeutschel ScanStudio combines the best of two worlds: the world of studio photography with the world of professional scanners.

The result is a digitization system that not only redefines flexibility and future-proof design, it meets the highest demands of image quality, has a productive operation with reliable results, and is also easy-to-use.

The Zeutschel ScanStudio is the result of a close cooperation between two world market leaders: Zeutschel – with overhead scanners as well as PhaseOne – with digital backs.

The Zeutschel ScanStudio comprises a camera system with digital back, a precision shutter (MTBF > 3 million), interchangeable lenses and the ErgoLED lighting system with flexible directed lighting. All system components are embedded in a solid, modular base unit.

New standards of flexibility

Designed as a completely modular system, Zeutschel ScanStudio offers the user unprecedented levels of flexibility. The system can be expanded or upgraded at any time as requirements grow or new tasks are added.

Showcasing interchangeable lenses, replaceable and upgradeable digital backs up to 100 megapixel resolution, the system concept also features a variety of copyboard systems. This includes transparency units, holders for the most common film formats, book cradles as well as copyboard tables for documents up to A1 size.

The upgrade capability makes upgrading to digital backs with higher resolutions in the future possible.

Richly detailed, color-true and high contrast images

The Zeutschel ScanStudio offers an image quality exceeding the provisions of the established digitization guidelines of FADGI, Metamorfoze and the ISO 19264-1 standard. This system solution uses the latest state-of-the-art generation of digital backs from PhaseOne. The results are sharp, noise-free and high contrast images that faithfully reproduce even the finest details.

Each perfect picture requires the right lighting. Instead of a flash, the Zeutschel ScanStudio uses the special Zeutschel ErgoLED ergonomic lighting system with two flexible adjustable LED lamps. This ensures glare-free, directed lighting and economic operation.

Reliable results, user-friendly, highest productivity

The Zeutschel ScanStudio is controlled using the OmniScan software, a proven tool for implementing efficient digitization workflows in archives and libraries.

In the software predefined workflows can be created containing all the major setting for the respective task. Not only does the Zeutschel ScanStudio offer the shortest shutter speeds, it also has the shortest scanning cycles, which have not yet been achieved by high-resolution digital cameras.

Modular Zeutschel ScanStudio – the all-in-one system for your digitization projects



ErgoLED lighting system, flexible adjustable

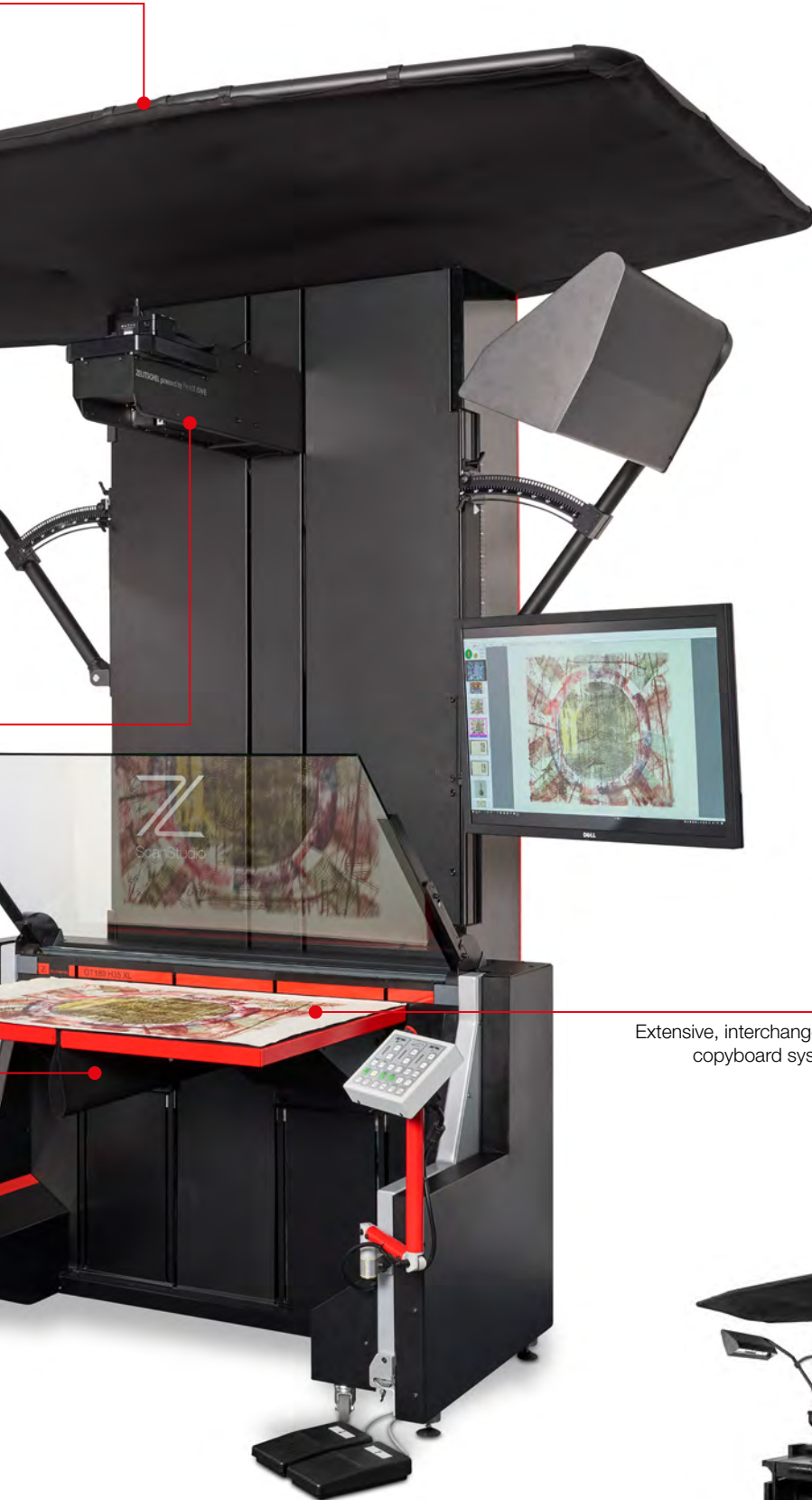
Zeutschel ScanStudio camera with interchangeable digital back and interchangeable lenses



Ergonomic operation and automatic function for highest standards of quality and maximum productivity



Compliant to
ISO 19264-1
FADGI
Metamorfoze



Extensive, interchangeable copyboard systems

Product advantages

- Modular, universal system for all digitization tasks
- Interchangeable digital backs and lenses
- Copyboard systems for a wide range of documents
- Highest productivity – shortest scanning cycles
- Reliable results through predefined workflows
- Automatic functions – autofocus, automatic exposure control, color profiles and automatic scanning
- Zeutschel ErgoLED lighting system for shadow- and reflection-free results
- Perfect Book 3.0 for image optimization

Copyboard systems

interchangeable A1 copy board systems with roll-in/roll-out

- **Book cradle OT 180H35 XL** with self-opening glass plate with adjustable opening angle, for max. bookthickness of 350 mm
- **Book cradle OT 180H50 XL** with self-opening glass plate with adjustable opening angle and changeable book plates, for max. bookthickness of 500 mm
- **Book cradle OT 90** for old and valuable books, with a max. book thickness of 240 mm
- **Top light table AT1** for opaque originals (e.g. technical drawings, geographic maps), max. format of original, opened: 1070×675 mm
- **Vacuum table** adjustable vacuum zone up to A2+
- **Transmissive light source** max. format up to A2, stand alone or with Advanced Plus book cradle. Adjustable illumination strength, adjustable light spectrum
- **Film carrier** for film formats 35 mm up to 8x10"
- **Glass negative carrier** with 4-way masking
- **Top light table A0** as an option



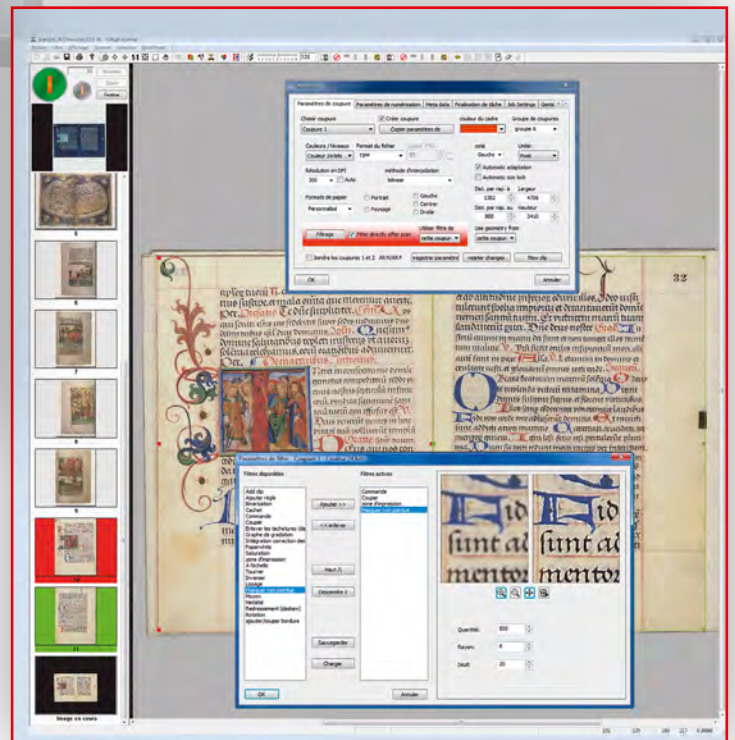
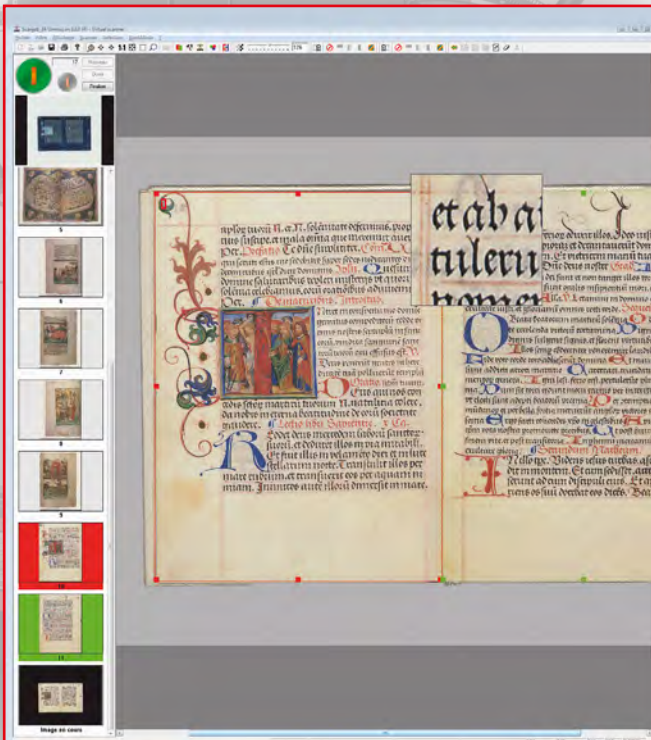
ScanStudio A1



ScanStudio A2

Software OS 12 for ScanStudio

- Scansoftware and post-processing software in one
- Wide range of filters and capturing tools
- Express mode for recurrent jobs
- Jobbased operation mode / jobmode
- 48 bit / 16 bit grayscale
- Multithreading for most efficient working
- Saving in all formats at the same time, also raw image
- Metadata implementation
- Adjustment of graduation curve
- Possible implementation of quality management tools



Options and Accessories



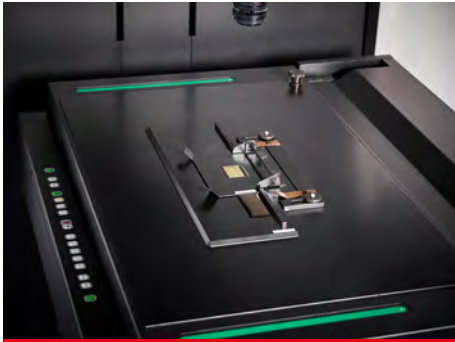
Backlight Unit A2



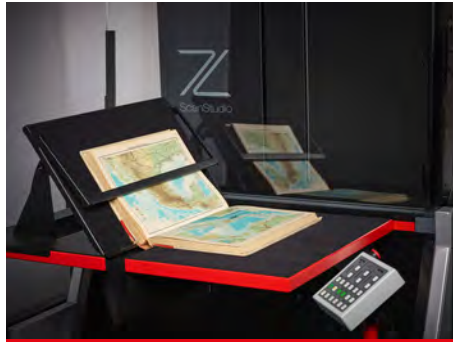
Kit 90° for A1 Bookcradle



ScanStudio with A2 bookcradle



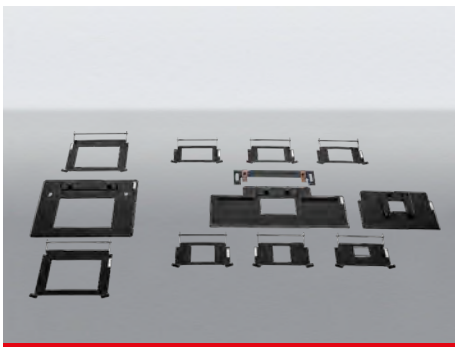
Backlight Table with film carrier for filmstrips



Kit 140°-90° for A1 Bookcradle



Kit 90° for format DIN A2



Various holders for micro films



Control Panel



Kit 140° -90° for A2 Bookcradle



Holder for glass plates, continuously adjustable



OS QM Tool and test targets



Photo table with glass plate and soft pad for very careful handling

| Technical data | ScanStudio A1 | ScanStudio A2 |
|--------------------------------------|--|----------------------------------|
| Sensor | | |
| Sensors | up to 100 MP | |
| Technology | CMOS | |
| Sensor format | medium format (4,5 × 6 cm) | |
| Data depth | 16 bit | |
| Dyn range in f-stops | 14 | |
| Dyn range in opt density | 4,2 | |
| Max opt. resolution | up to 9000 dpi | |
| Camera Type | | |
| Camera Type | Zeutschel ScanStudio Camera | |
| Shutter | rotary shutter MTBF > 3 Mio | |
| shutter speed | 1/50 - 1 sec.; ∞ | |
| Lens range | 60-240 mm 70 mm for format A2 – A1, 50 MP and 100 MP 90 mm for format A7 – A2, 50 MP 100 mm for format A7 – A2 for 100 MP Macro lense 120 mm for format 24 × 36 mm - 4x5 | 60-240 mm |
| Lens detection | optical, automatic | |
| Reprostand | | |
| Dimensions | height 2400 mm × depth 800 mm × width 1200 mm | |
| Working height | 700 - 900 mm pre adjustable | |
| Autofocus | yes | |
| Environmental light control | glare and stray light control | |
| Illumination | | |
| LED | full spectral LED | |
| Illuminance | adjustable 500-4500 lx | |
| ErgoLED | ergonomic design, non dazzling, soft dimm automatic | |
| Performance | | |
| Scanning time | 50 ms (typical) | |
| Cycle time | 3,4-6 sec, typical values | |
| Standards | | |
| ISO 19264 | Quality level > A | |
| FADGI | Quality level > 3 Star *** (A1) | Quality level > 4 Star **** (A2) |
| Metamoforze | Quality level > Full Metamofoze | |
| Electrical & Conformities | | |
| Primary power | 110-240V 50/60HZ 480VA | |
| Electrical safety | 60950-3; IEC 62368-1:2014 | |
| EMC | EN 55022; EN55024; EN61000-3-2; EN61000-3-3 US,CAN: FCC, Part 15 class B, ICES-003 Class B | |
| Lamp system | According to EN 62471 "Photobiological safety of lamps and lamp systems" | |
| Software | | |
| Operating system | WIN10 (64-Bit) | |
| Software | OmniScan 12.10 / OmniScan 14 | |
| Color management | according to ICC Standard | |
| Book curve correction | PerfectBook 3.0 | |

We reserve the right to make technical changes without notice.



CROWLEY

240.215.0224
info@thecrowleycompany.com
www.thecrowleycompany.com



We Digitize Your World